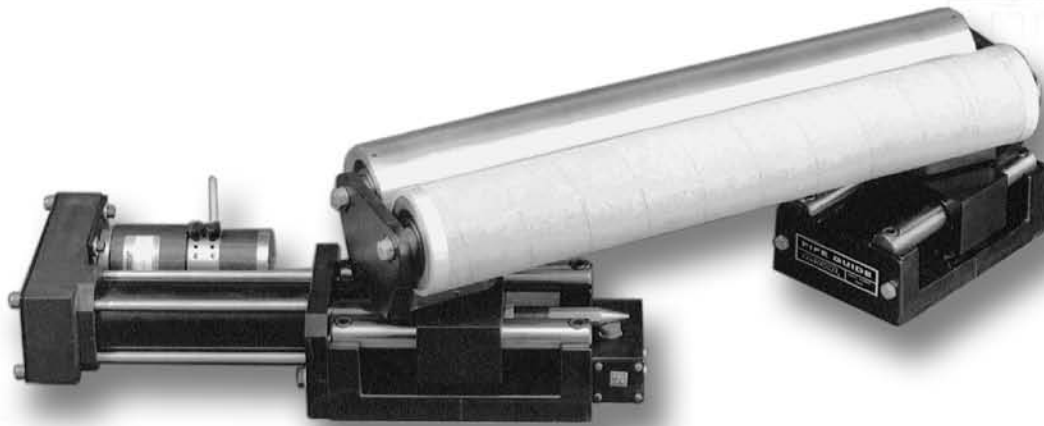




A Maxcess
International
Company

Kamberoller® Steering Guide



KEY
FEATURES

The innovative KAMBEROLLER® Steering Guide delivers precise web position by bending the web through a long entering span. This versatile guiding assembly provides immediate lateral correction for transient errors, while at the same time compensating for the web's steady state errors.

KAMBEROLLER® steering guides are available with single or double rollers, and can accommodate tensions up to 1245 lbs (5,538 N). Standard roll face lengths range from 15" (381 mm) to 120" (3,048 mm), and roll diameters from 4" (102 mm) to 8" (203 mm).

Powered either with an electromechanical actuator or hydraulic cylinder, KAMBEROLLER® Steering Guides are designed for dependable operation in the most demanding environments. The guides also feature two cast bases, hardened racerod supports, and low-friction ball bushings.

Key Features:

- Our largest guide, accommodating web widths up to 120" (3,048 mm), and tensions to 1245 lbs (5,538 N).
- Unique design provides web position correction by bending web through long entering span.
- Electromechanical or hydraulic system operation.
- Fast, accurate web positioning.
- Low-friction ball bushings and racerod supports.
- Durable construction for low maintenance and long-lasting reliability.
- Compatible with all standard Fife sensors and controllers.
- Sensor selection is based on web material and system requirements.
- Optional Servo-Center available to speed setup and threading.
- Wide selection of mounting brackets, stands, sensors, and controllers available to ensure quick and easy installation.
- Custom designs are available upon request.

SPECS

General Specifications

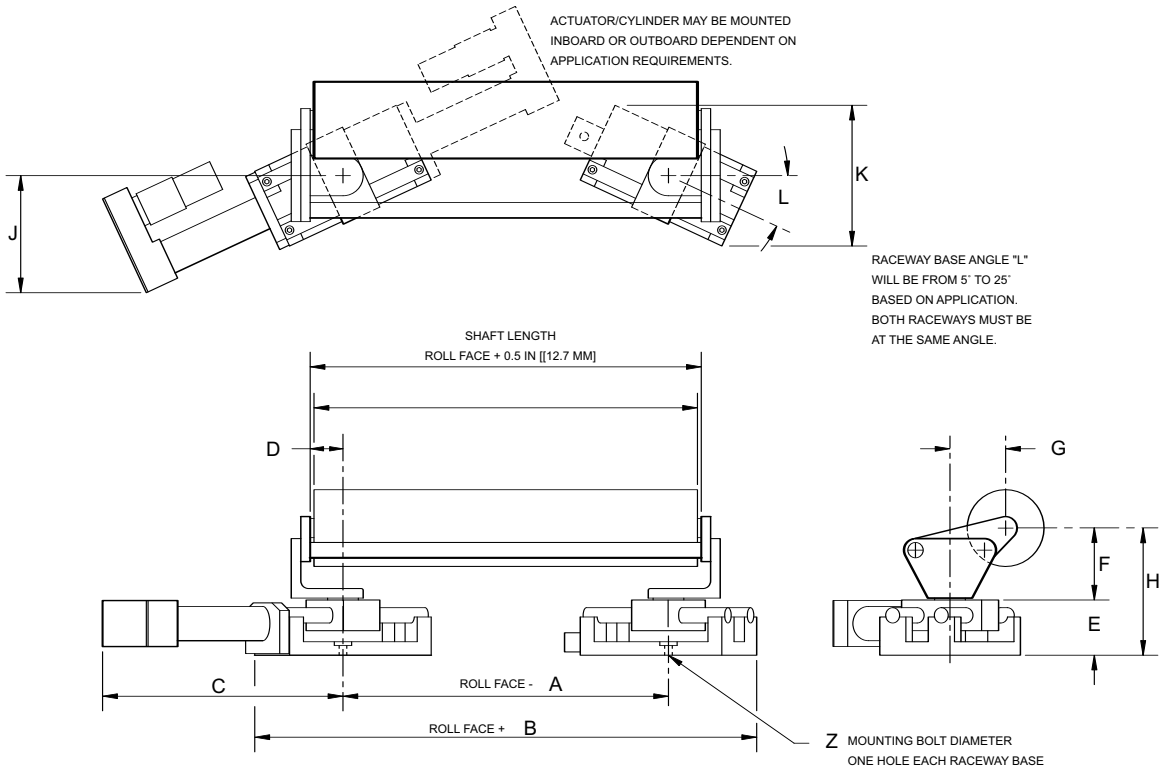
Product Name:
KAMBEROLLER® Steering Guide

Load Capacity:
Up to 1,245 lbf (5,538 N)

Roller Face:
15 to 120"
(381 to 3,048 mm)



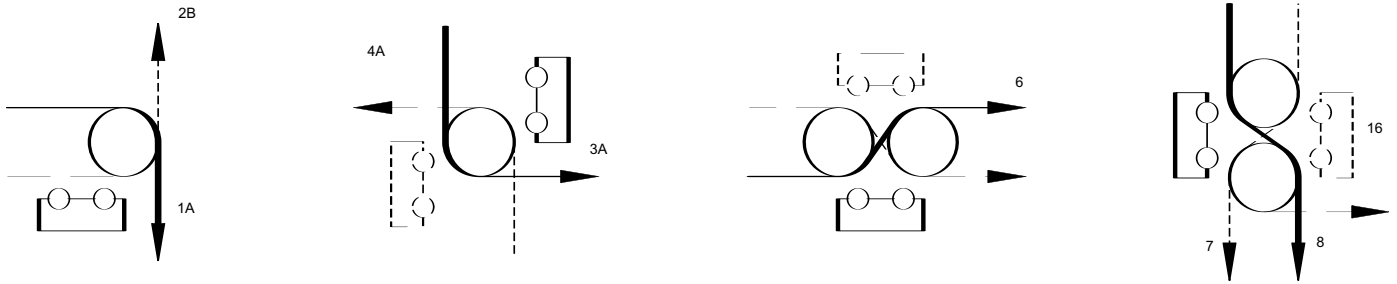
KAMBEROLLER INSTALLATION DIMENSIONS



Kamberoller Dimension Chart

MODEL	CORR. ± in. (mm)	NOMINAL ROLL DIAMETER in. (mm)	A in. (mm)	B in. (mm)	C in. (mm)	D in. (mm)	E in. (mm)	F in. (mm)	G in. (mm)	J in. (mm)	K in. (mm)	Z in. (mm)
KLB	1.5 (38)	3.0 & 4.0 (76 & 102)	1.25 (32)	7.4 (188)	9.3 (236)	0.88 (22)	3.0 (76)	4.13 (105)	4.38 (111)	6.9 (175)	6.7 (170)	1/2 (13)
KA-4	1.5 (38)	4.0 & 6.0 (102 & 152)	3.75 (95)	10.0 (254)	10.3 (262)	2.13 (54)	3.5 (89)	4.68 (119)	3.63 (92)	7.8 (198)	9.3 (236)	1/2 (13)
KA	2.5 (64)	4.0 & 6.0 (102 & 152)	3.75 (95)	11.6 (295)	12.7 (323)	2.13 (54)	3.5 (89)	4.68 (119)	3.63 (92)	9.5 (241)	10.5 (267)	1/2 (13)
KA-9	4.5 (114)	4.0 & 6.0 (102 & 152)	3.75 (95)	14.9 (378)	17.7 (450)	2.13 (54)	3.5 (89)	4.68 (119)	3.63 (92)	13.0 (330)	12.8 (325)	1/2 (13)
KCA	2.5 (64)	4.0 & 6.0 (102 & 152)	3.75 (95)	12.6 (320)	12.8 (325)	2.13 (54)	3.5 (89)	6.50 (165)	6.00 (152)	9.6 (244)	11.9 (302)	5/8 (16)
KCA-9	4.5 (114)	4.0 & 6.0 (102 & 152)	3.75 (95)	15.9 (404)	17.7 (450)	2.13 (54)	3.5 (89)	6.50 (165)	6.00 (152)	13.0 (330)	14.2 (361)	5/8 (16)
KHA-4	1.5 (38)	6.0 (152)	3.75 (95)	12.1 (307)	10.9 (277)	2.13 (54)	4.6 (117)	6.50 (165)	6.00 (152)	8.3 (211)	11.6 (295)	3/4 (19)
KHA	2.5 (64)	6.0 (152)	3.75 (95)	13.7 (348)	13.4 (340)	2.13 (54)	4.6 (117)	6.50 (165)	6.00 (152)	10.0 (254)	12.8 (325)	3/4 (19)
KHA-9	4.5 (114)	6.0 (152)	3.75 (95)	17.1 (434)	18.3 (465)	2.13 (54)	4.6 (117)	6.50 (165)	6.00 (152)	13.5 (343)	15.1 (384)	3/4 (19)
KHA-12	6.0 (152)	6.0 (152)	3.75 (95)	19.3 (490)	21.9 (556)	2.13 (54)	4.6 (117)	6.50 (165)	6.00 (152)	16.0 (406)	16.7 (424)	3/4 (19)
KHA-9-T2	3.0 (76)	8.0 (203)	3.75 (95)	17.1 (434)	15.9 (404)	2.13 (54)	4.6 (117)	6.50 (165)	6.00 (152)	11.7 (297)	15.1 (384)	3/4 (19)
KHA-12-T2	4.5 (114)	8.0 (203)	3.75 (95)	19.3 (490)	19.4 (493)	2.13 (54)	4.6 (117)	6.50 (165)	6.00 (152)	14.2 (361)	16.7 (424)	3/4 (19)

WRAP STYLE LOADING CONFIGURATION



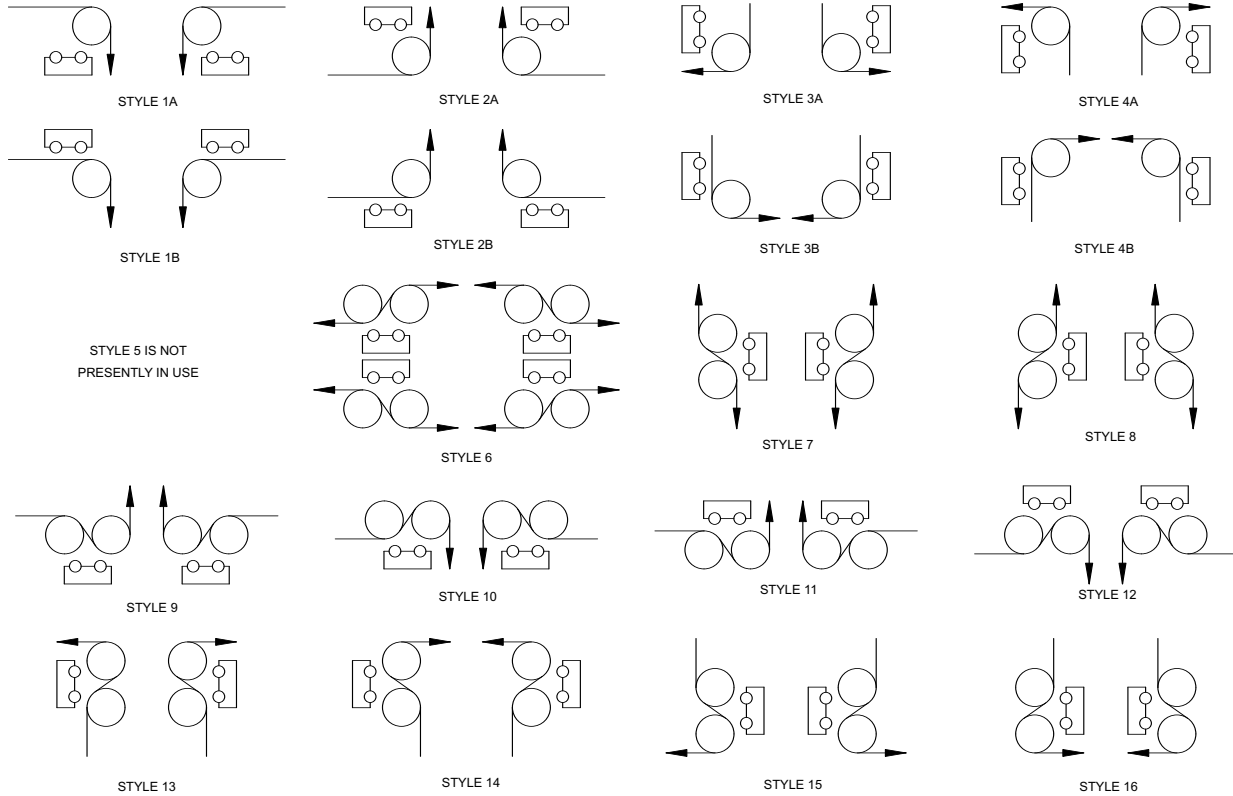
Kamberoller Guide Selection and Sizing Chart (for above illustrated wrap styles)

MODEL	NOMINAL ROLLER DIAMETER in. (mm)	NOMINAL ROLLER LENGTH in. (mm)	WRAP STYLE NOMINAL MAXIMUM TENSION lbs (N)						
			1A	2B	3A	4A	6	7 or 8	16
KLB	2.25 (57) to 6.0 (152)	30.0 (762) to 48.0 (1219)	155 (690)	100 (445)	180 (801)	85 (378)	95 (423)	230 (1023)	60 (267)
KA	4.0 (102) to 8.0 (203)	30.0 (762) to 48.0 (1219)	240 (1068)	170 (756)	355 (1579)	155 (690)	295 (1312)	580 (2580)	145 (645)
KCA-9	4.0 (102) to 8.0 (203)	30.0 (762) to 60.0 (1524)	280 (1246)	225 (1000)	345 (1535)	210 (934)	260 (1157)	480 (2135)	160 (172)
KHA-12	4.0 (102) to 8.0 (203)	30.0 (762) to 60.0 (1524)	700 (3114)	555 (2469)	950 (4226)	535 (2380)	695 (3092)	1330 (5916)	415 (1846)
KHA-9-T2	4.0 (102) to 8.0 (203)	30.0 (762) to 120.0 (3048)	1290 (5694)	1020 (4537)	1740 (7740)	975 (4337)	1280 (5694)	2440 (10854)	760 (3381)

NOTES:

1. Selections for illustrated single-roller Kamberoller guides are based on Offset Raceway Clearance Pivot Brackets (roller supports).
2. Selections for illustrated two-roller Kamberoller guides are based on Offset Pivot Brackets.
3. Roller size (diameter, wall thickness, length, and material), web wrap style, and tension will affect guide selection.
4. All information displayed in the chart above is approximate and is based on ball bushings.
Stainless steel racerods and Teflon bushings are available for special applications.
5. Fife will verify Kamberoller guide type and size for each application.
6. Additional wrap styles available are illustrated on the last page of this product sheet.
7. All dimensions in parenthesis are millimeters

STEERING GUIDE WRAP STYLES



Complementary Products:

FIFE

- Guiding Products & Systems
 - CDP-01 Web Guide Controller
 - SE-22 Infrared Sensor
- Inspection Products & Systems

TIDLAND

- Slitting Products & Systems
- Winding Products

MAGPOWR

- Tension Control Products
- Torque Control Products



Fife Corporation
 222 West Memorial Road
 Oklahoma City, OK 73114, USA
 Phone: 405-755-1600
 Fax: 405-755-8425
 E-mail: fife@fife.com
 Web: www.fife.com

Maxcess Europe
 Fifestrasse 1, D-65779
 Kelkheim/Ts., Germany
 Phone: (49) 6195-7002-433
 Fax: (49) 6195-7002-933
 E-mail: info@maxcess.de

Maxcess Asia
 300 Orchard Road, No. 15-05
 Orchard Towers
 Singapore 238875
 Phone: (65) 6834-1998
 Fax: (65) 6835-4818
 E-mail: jwongmax@singnet.com.sg



MAXCESS INTERNATIONAL COMPANIES



GUIDING · INSPECTION
 1-800-639-3433
 (405) 755-1600



TENSION CONTROL
 1-800-MAGPOWR
 (405) 755-1600



SLITTING · WINDING
 1-800-426-1000
 (360) 834-2345