



Reliable Slit Web Separation and Wrinkle Removal

Webex Bowed Rolls are built tough for years of continued use at all specified speeds. Available in permanent bow and adjustable bow models, they feature proven mounting solutions that ensure ease of installation and extended versatility in web control.

The even distribution of lateral tension and vibration-free operation provided by these rolls is ideal for the separation of slit webs, elimination of web wrinkles, slack edges and soft spots.



GENERAL SPECIFICATIONS

DIAMETER	AJUSTA-BOW	PERMA-BOW
1 1/2 Inches		●
3 1/2 Inches	●	●
4 Inches	●	●
4 1/4 Inches	●	●
4 1/2 Inches	●	●
5 1/4 Inches	●	●
5 1/2 Inches	●	●
6 1/4 Inches	●	●
6 1/2 Inches	●	●
7 1/2 Inches		●

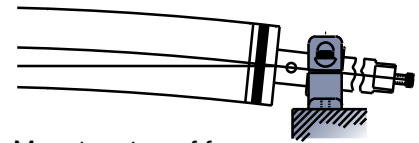
KEY FEATURES

- Precision-engineered mounts and bearing housings simplify bowed roll installation and service
- Bowed roll coverings are available; from abrasion and heat resistant to high-release or dielectric properties
- Optional adjustable mounts let you rotate the roll apex while running at full line speeds to achieve optimal web engagement and control
- Optional outer sleeves made of highly durable synthetic rubber compounds and specified to each application
- Corded sleeves available for high operating speeds

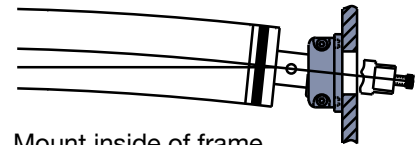
MOUNTING OPTIONS



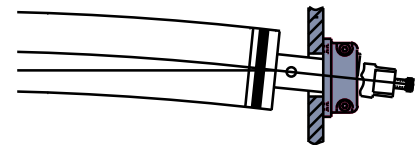
Perma-Bow
Shown with adjustable bearing mounts and standard nitrile cover



Mount on top of frame



Mount inside of frame



Mount outside of frame



Adjusta-Bow
Shown with standard pedestal mounts and optional hypalon cover

RECOMMENDED WRAP AND BOW

APPLICATION	MATERIAL	WRAP ANGLE	BOW (% OF COVER LENGTH)
Slit Separation	Film	30° - 150°	0.5% - 0.75%
	Paper	30° - 150°	0.5% - 0.75%
Wrinkle Removal	Film	30° - 90°	1% - 1.125%
	Paper	20° - 90°	1.25% - 1.5%
	Textiles and Nonwovens	45° - 120°	2% - 2.5%
Increase Width	Textiles and Nonwovens	60° - 150°	5% - 7%



NORTH, CENTRAL AND SOUTH AMERICA

Tel +1.920.729.6666
Fax +1.920.725.9992
sales@webexinc.com
www.maxcessintl.com

INDIA

Tel +91.22.27602633
Fax +91.22.27602634
india@maxcessintl.com
www.maxcess.in

EUROPE, MIDDLE EAST AND AFRICA

Tel +49.6195.7002.0
Fax +49.6195.7002.933
sales@maxcess.eu
www.maxcess.eu

JAPAN

Tel +81.43.421.1622
Fax +81.43.421.2895
japan@maxcessintl.com
www.maxcess.jp

CHINA

Tel +86.756.881.9398
Fax +86.756.881.9393
info@maxcessintl.com.cn
www.maxcessintl.com.cn

KOREA, TAIWAN AND SE ASIA

Tel +65.9620.3883
Fax +65.6235.4818
asia@maxcessintl.com